



Características

Antena Dual Band: 144-148 MHz VHF / 430-440 MHz UHF
Diagrama omnidirecional
Montagem em topo ou lateral de torre
Reduzida carga de vento com construção robusta

Especificações

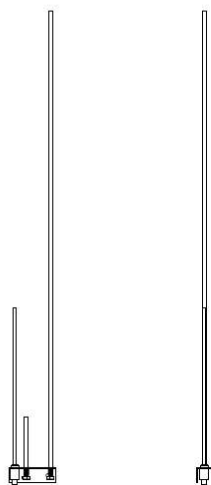
Potência Max.	200W
Ganho	5.75 dBi VHF / 8.15dBi UHF
Faixa de Frequência	144 a 148 MHz (VHF) 430 a 440 MHz (UHF)
Polarização	Vertical linear
Diagrama Horizontal	Omnidirecional
Impedância de entrada	50 Ohms
VSWR Máx. no canal	144 a 148 MHz (SWR < 1.5) 430 a 440 MHz (SWR < 1.5)
Conector de entrada	UHF-fêmea (SO239)
Velocidade máx. de vento	190 Km/h

Material Empregado:

Estrutura da antena em alumínio

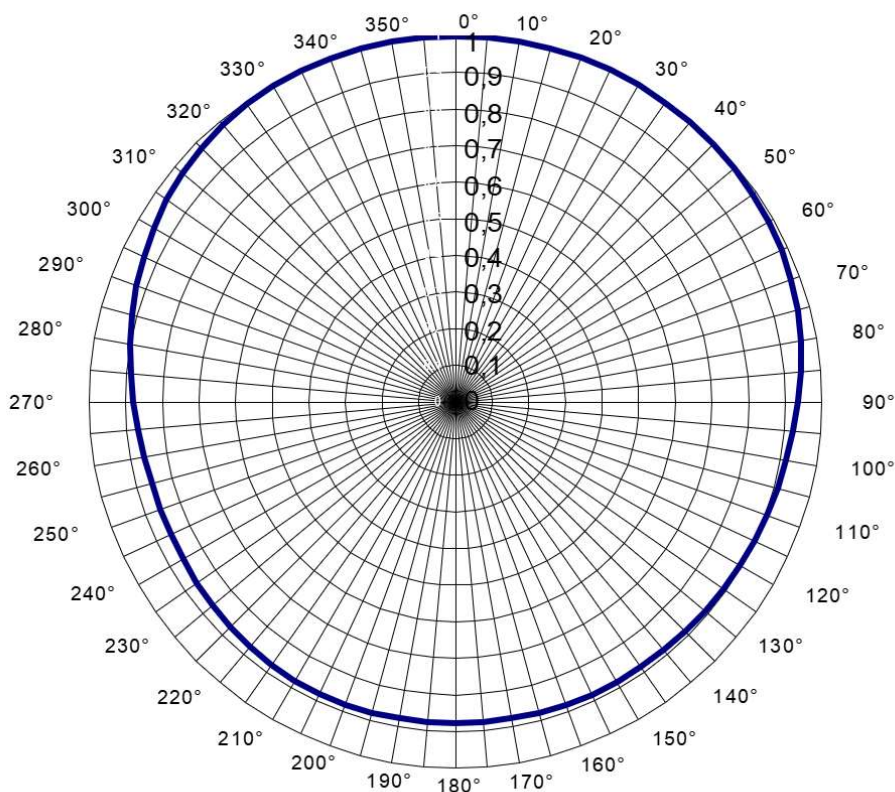
Montagem:

Fixação em topo ou lateral de torres .



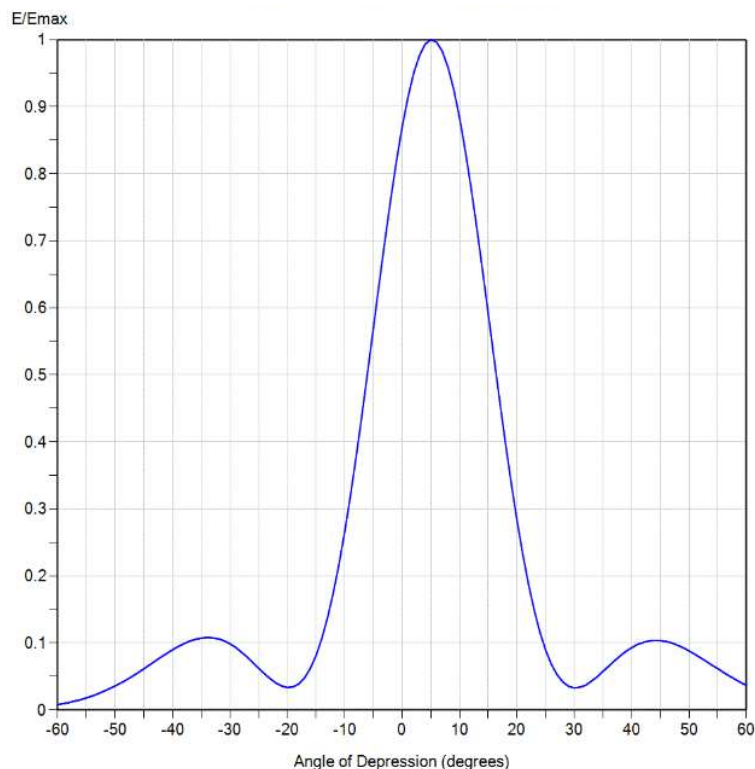
Modelo: AJVU

Diagrama Horizontal Escala E/Emax



Graus	E/Emax	(dB)	(%)	Graus	E/Emax	(dB)	(%)	Graus	E/Emax	(dB)	(%)	Graus	E/Emax	(dB)	(%)
0°	0.9988494	-0.01	99.77%	90°	0.9343294	-0.59	87.30%	180°	0.8759917	-1.15	76.74%	270°	0.8790225	-1.12	77.27%
5°	0.9988494	-0.01	99.77%	95°	0.9246982	-0.68	85.51%	185°	0.8759917	-1.15	76.74%	275°	0.8892011	-1.02	79.07%
10°	0.9988494	-0.01	99.77%	100°	0.9162205	-0.76	83.95%	190°	0.8770008	-1.14	76.91%	280°	0.9015711	-0.9	81.28%
15°	1	0	100.00%	105°	0.9099133	-0.82	82.79%	195°	0.8790225	-1.12	77.27%	285°	0.9141132	-0.78	83.56%
20°	1	0	100.00%	110°	0.9036495	-0.88	81.66%	200°	0.8800351	-1.11	77.45%	290°	0.9268298	-0.66	85.90%
25°	1	0	100.00%	115°	0.8994976	-0.92	80.91%	205°	0.8800351	-1.11	77.45%	295°	0.938642	-0.55	88.10%
30°	0.9988494	-0.01	99.77%	120°	0.8953648	-0.96	80.17%	210°	0.8790225	-1.12	77.27%	300°	0.9506048	-0.44	90.36%
35°	0.9977001	-0.02	99.54%	125°	0.8912509	-1	79.43%	215°	0.8759917	-1.15	76.74%	305°	0.96272	-0.33	92.68%
40°	0.9965521	-0.03	99.31%	130°	0.888178	-1.03	78.89%	220°	0.8729714	-1.18	76.21%	310°	0.971628	-0.25	94.41%
45°	0.9942601	-0.05	98.86%	135°	0.8861352	-1.05	78.52%	225°	0.8689604	-1.22	75.51%	315°	0.9806183	-0.17	96.16%
50°	0.9919733	-0.07	98.40%	140°	0.8840972	-1.07	78.16%	230°	0.8649679	-1.26	74.82%	320°	0.9862795	-0.12	97.27%
55°	0.9896919	-0.09	97.95%	145°	0.8830799	-1.08	77.98%	235°	0.8609938	-1.3	74.13%	325°	0.9919733	-0.07	98.40%
60°	0.9862795	-0.12	97.27%	150°	0.8820638	-1.09	77.80%	240°	0.8580251	-1.33	73.62%	330°	0.9954054	-0.04	99.08%
65°	0.9817479	-0.16	96.38%	155°	0.8820638	-1.09	77.80%	245°	0.8560517	-1.35	73.28%	335°	0.9977001	-0.02	99.54%
70°	0.9749896	-0.22	95.06%	160°	0.8810489	-1.1	77.62%	250°	0.8560517	-1.35	73.28%	340°	0.9988494	-0.01	99.77%
75°	0.9660509	-0.3	93.33%	165°	0.8790225	-1.12	77.27%	255°	0.8580251	-1.33	73.62%	345°	1	0	100.00%
80°	0.9560927	-0.39	91.41%	170°	0.8770008	-1.14	76.91%	260°	0.8629785	-1.28	74.47%	350°	1	0	100.00%
85°	0.9451484	-0.49	89.33%	175°	0.8759917	-1.15	76.74%	265°	0.8699614	-1.21	75.68%	355°	0.9988494	-0.01	99.77%

Diagrama Vertical Escala E/E_{max}



Angle	Field	Angle	Field	Angle	Field	Angle	Field	Angle	Field	Angle	Field
-10.0	0.266	2.4	0.960	10.6	0.854	30.5	0.033	51.0	0.083	71.5	0.007
-9.5	0.293	2.6	0.965	10.8	0.845	31.0	0.034	51.5	0.080	72.0	0.006
-9.0	0.320	2.8	0.971	11.0	0.835	31.5	0.035	52.0	0.078	72.5	0.006
-8.5	0.349	3.0	0.976	11.5	0.807	32.0	0.037	52.5	0.075	73.0	0.005
-8.0	0.379	3.2	0.979	12.0	0.780	32.5	0.040	53.0	0.073	73.5	0.005
-7.5	0.409	3.4	0.983	12.5	0.750	33.0	0.043	53.5	0.070	74.0	0.004
-7.0	0.440	3.6	0.986	13.0	0.720	33.5	0.046	54.0	0.067	74.5	0.004
-6.5	0.473	3.8	0.990	13.5	0.688	34.0	0.049	54.5	0.064	75.0	0.003
-6.0	0.505	4.0	0.993	14.0	0.657	34.5	0.053	55.0	0.062	75.5	0.003
-5.5	0.538	4.2	0.995	14.5	0.624	35.0	0.058	55.5	0.059	76.0	0.003
-5.0	0.570	4.4	0.996	15.0	0.592	35.5	0.061	56.0	0.056	76.5	0.003
-4.5	0.603	4.6	0.997	15.5	0.559	36.0	0.065	56.5	0.053	77.0	0.002
-4.0	0.636	4.8	0.999	16.0	0.526	36.5	0.069	57.0	0.051	77.5	0.002
-3.5	0.668	5.0	1.000	16.5	0.493	37.0	0.073	57.5	0.048	78.0	0.002
-3.0	0.700	5.2	0.999	17.0	0.461	37.5	0.077	58.0	0.046	78.5	0.002
-2.8	0.712	5.4	0.999	17.5	0.430	38.0	0.081	58.5	0.043	79.0	0.001
-2.6	0.725	5.6	0.998	18.0	0.398	38.5	0.084	59.0	0.041	79.5	0.001
-2.4	0.737	5.8	0.997	18.5	0.369	39.0	0.088	59.5	0.039	80.0	0.001
-2.2	0.749	6.0	0.996	19.0	0.339	39.5	0.090	60.0	0.037	80.5	0.001
-2.0	0.761	6.2	0.994	19.5	0.311	40.0	0.093	60.5	0.035	81.0	0.001
-1.8	0.773	6.4	0.991	20.0	0.284	40.5	0.095	61.0	0.033	81.5	0.001
-1.6	0.784	6.6	0.988	20.5	0.259	41.0	0.098	61.5	0.031	82.0	0.001
-1.4	0.795	6.8	0.985	21.0	0.233	41.5	0.099	62.0	0.029	82.5	0.001
-1.2	0.807	7.0	0.983	21.5	0.211	42.0	0.101	62.5	0.027	83.0	0.001
-1.0	0.818	7.2	0.978	22.0	0.188	42.5	0.102	63.0	0.025	83.5	0.000
-0.8	0.829	7.4	0.973	22.5	0.169	43.0	0.103	63.5	0.024	84.0	0.000
-0.6	0.839	7.6	0.968	23.0	0.149	43.5	0.103	64.0	0.022	84.5	0.000
-0.4	0.849	7.8	0.963	23.5	0.133	44.0	0.104	64.5	0.020	85.0	0.000
-0.2	0.859	8.0	0.959	24.0	0.116	44.5	0.104	65.0	0.019	85.5	0.000
0.0	0.869	8.2	0.952	24.5	0.103	45.0	0.104	65.5	0.018	86.0	0.000
0.2	0.878	8.4	0.945	25.0	0.089	45.5	0.103	66.0	0.016	86.5	0.000
0.4	0.887	8.6	0.939	25.5	0.079	46.0	0.102	66.5	0.015	87.0	0.000
0.6	0.896	8.8	0.932	26.0	0.068	46.5	0.101	67.0	0.014	87.5	0.000
0.8	0.905	9.0	0.926	26.5	0.060	47.0	0.100	67.5	0.013	88.0	0.000
1.0	0.913	9.2	0.917	27.0	0.053	47.5	0.098	68.0	0.012	88.5	0.000
1.2	0.921	9.4	0.909	27.5	0.047	48.0	0.096	68.5	0.011	89.0	0.000
1.4	0.928	9.6	0.901	28.0	0.042	48.5	0.095	69.0	0.010	89.5	0.000
1.6	0.935	9.8	0.892	28.5	0.038	49.0	0.093	69.5	0.010	90.0	0.000
1.8	0.942	10.0	0.884	29.0	0.035	49.5	0.090	70.0	0.009		
2.0	0.950	10.2	0.874	29.5	0.034	50.0	0.088	70.5	0.008		
2.2	0.955	10.4	0.864	30.0	0.033	50.5	0.086	71.0	0.008		